



# Gonneville Project

A critical minerals mine development, located in the Shire of Toodyay, on Chalice-owned farmland, approximately 70 km north-east of Perth, Western Australia.

## Regional Investment

The Gonneville Project has the potential to deliver substantial benefits to the regions by creating local jobs and supporting local businesses.

Since the discovery in 2020, Chalice and our Contractors have contributed \$11 million to local communities surrounding the Project.

### Supporting local communities

- » The Chalice Community Investment Program (CIP) provides two rounds of funding every year to support community programs, ideas and events that deliver local education, and environment initiatives.
- » To date, \$420,000 of funding has been distributed to community groups across the local government areas of Toodyay, Chittering, Northam, Swan Valley and Goomalling.

## Sustainable Development

Chalice is committed to developing the Project in a responsible and sustainable way. Chalice will follow strong standards and governance processes to ensure environmental responsibilities are met across all activities.

Strong environmental and cultural heritage management will help deliver long-term benefits for the community and the region.

Chalice has undertaken extensive field studies since 2020 to understand the environmental considerations of the Project area.

Chalice has committed to a goal of no net loss of species or habitat diversity as a result of the Project. Restoration work and industry-leading offsets are already advanced and expected to create significant new habitat and vegetation corridors between the Julimar State Forest and the Moodyne Nature Reserve.

### Creating local jobs

Chalice will prioritise local jobs during both the construction and operations phases.

Economic studies<sup>1</sup> forecast the Project has the potential to deliver:



**~1,200**  
peak jobs during  
construction



**~500**  
jobs during  
operations

### Consultation with Traditional Owners

- » Chalice has engaged with Whadjuk Traditional Owners since 2021 with more than 70 Traditional Owners involved in cultural heritage monitoring and surveys across the region.
- » The Project is in the Whadjuk Indigenous Land Use Agreement (ILUA) area (which guides how land is used and how cultural heritage is managed).
- » Whadjuk has conducted Cultural Heritage surveys across the Mine Development Envelope (MDE) and participated in environmental surveys undertaken by Chalice.

<sup>1</sup> ACIL Allen economic impact assessment (EIA), August 2023

## About the Gonneville Project

A large scale deposit of palladium, platinum, nickel, copper, cobalt and gold was discovered at the site in 2020.

The Project will involve construction of an open-pit mine, processing facility and supporting infrastructure to enable extraction and processing of critical minerals.

### At a glance

- » These critical minerals are important for the automotive, defence, data centre and decarbonisation sectors.
- » Global demand for these minerals is expected to grow as the world transitions towards decarbonisation and cleaner energy technologies.
- » The Project has been recognised as a "Strategic Project" by the WA State Government and a "Major Project" by the Commonwealth Government.
- » The Pre-Feasibility Study (PFS) was completed in December 2025, confirming the Project as a long-life, large-scale and globally competitive project.
- » The Project is in the Feasibility and Permitting Stage where it is being assessed to determine whether it is viable, what environmental impacts may occur, and how these will be managed as part of the approvals process.
- » The Project, subject to a positive Financial Investment Decision, is planned to be constructed in two stages:
  - » Stage 1 (years one to four) - open-pit mining and processing, up to 5Mtpa\*.
  - » Stage 2 (years five to 20+) - open-pit mining and processing, up to 14Mtpa\*.
- » Mining operations are expected to begin towards the end of the decade, with a projected mine life of 20+ years.
- » Project infrastructure will be contained within a 2,240ha (~22.4km<sup>2</sup>) area on Challice-owned farmland.
- » This area is partly cleared from previous agricultural use, and some additional clearing of remnant vegetation will be required.

\* Million tonnes per annum

## Key Infrastructure

The proximity of the Project to Perth, Northam and Swan Valley regions allows direct access to major highways, power, water, ports and a highly skilled workforce.

A new process water pipeline and power lines to the site will be constructed. Potential corridors for this infrastructure are being investigated in consultation with Water Corporation, Western Power, Local Government and other stakeholders.

Products from the mine site will be transported to domestic and/or overseas customers for further refinement into metals.



### POWER

- » Connection to Western Power's South West Interconnected System (SWIS) grid.
- » Construction of a new ~27km dual transmission line.
- » Onsite power from hybrid solar-battery and diesel peaking.



### WATER

- » Water to be supplied to site from Water Corporation's Alkimos wastewater treatment plant via a new ~63km pipeline.
- » An agreement is in place with Water Corporation to use treated wastewater currently discharged to the ocean.
- » Treated wastewater is expected to provide the volume required for operation.



### ROADS

- » Processed materials will be trucked to the Port of Bunbury.
- » As production increases, additional materials to be trucked and shipped via the planned new Kwinana Bulk Terminal Port.
- » Upgrades to local roads will be required.

# Environmental Approvals

Before a mine, processing plant and supporting infrastructure can be developed, the Project must receive the approval of State and Commonwealth governments.

The Project will be assessed under:

- » The State *Environmental Protection Act 1986* by the Environmental Protection Authority (State).
- » The Commonwealth *Environment Protection and Biodiversity Conservation Act 1999* by the Department of Climate Change, Energy, the Environment and Water (Commonwealth).
- » These assessments will examine the proposed mine and infrastructure corridors, information about potential environmental impacts and how these impacts will be managed.

Chalice is committed to rigorous standards and governance frameworks to ensure responsible environmental practices are followed in all our activities. We take our environmental responsibilities seriously.

## How are impacts assessed?

The WA EPA uses a system of 'Environmental Factors' for assessing potential impacts of a project. In total, there are 14 factors that come under five themes: **Land, Water, Air, People and Sea\***.

The Project will be assessed on the following environmental factors:



### LAND

#### Flora and Vegetation

Potential disturbance and impact on plants and vegetation types

#### Terrestrial Environmental Quality

Potential landscape and soil quality impacts

#### Terrestrial Fauna

Impacts on animals including habitat and biodiversity impacts

#### Landforms

Impacts of additional landforms



### WATER

#### Inland Waters (surface and groundwater)

Hydrology and water quality



### AIR

#### Air Quality

Potential emissions from the mine

#### Greenhouse Gas Emissions

Potential emissions and reduction opportunities



### PEOPLE

#### Social Surroundings

Impacts including visual amenity, noise, heritage

\* The 'Sea' theme does not require assessment for this project.



## Approvals Process

Chalice refers proposal to State and Commonwealth Government <sup>1,2</sup>

Public comment period on level of assessment required

Governments consider the level of assessment

Chalice undertakes the required studies and assessments

Environmental Review Document (ERD) submitted

Public comment period in response to the ERD

Chalice responds to submissions (public comments)

Government publishes assessment and report

State EPA appeals process (public comment)

Ministerial decision

1. State: WA Environmental Protection Authority
2. Commonwealth (DCCEE): Department of Climate Change, Energy, the Environment and Water

~3yrs

## Next steps

- » Chalice is preparing an Environmental Review Document (ERD) for the State and a Public Environment Report for the Commonwealth, incorporating outcomes from studies currently underway.
- » These documents will be available for community review and comment as the Project develops.
- » The ERD, PER and public submissions will inform State and Commonwealth decisions on if the Project should be approved and, if so, what conditions should apply.
- » Decisions will be published by the State and Commonwealth governments.
- » These assessment and approvals are expected to be completed by H1, CY2028.

Have your say in the approvals process



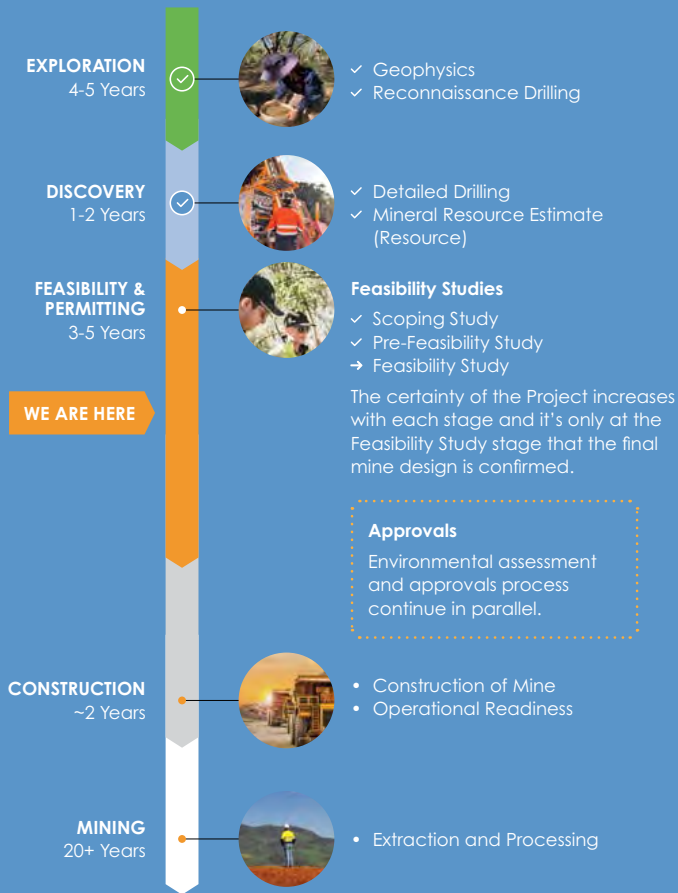
Chalice is completing environmental studies and approvals to ensure community feedback and environmental considerations are incorporated early in the Project plans.

Study results will be available for community review and comment as the Project develops. Chalice will advertise public comment periods when they open. We encourage community members to participate during these periods.

For information about the environmental assessment and approval process or formal public comment periods, visit <https://www.epa.wa.gov.au/public-comment-and-submissions-proposals>



# Project Timeline



# Keep in Touch

Below you can find details on the various ways you to stay informed or ask questions.

Chalice will continue to consult with and keep the community up to date as the Project advances. It's important to us that we hear from those who may be impacted by the Project or would like to know more.



### Newsletters & Website

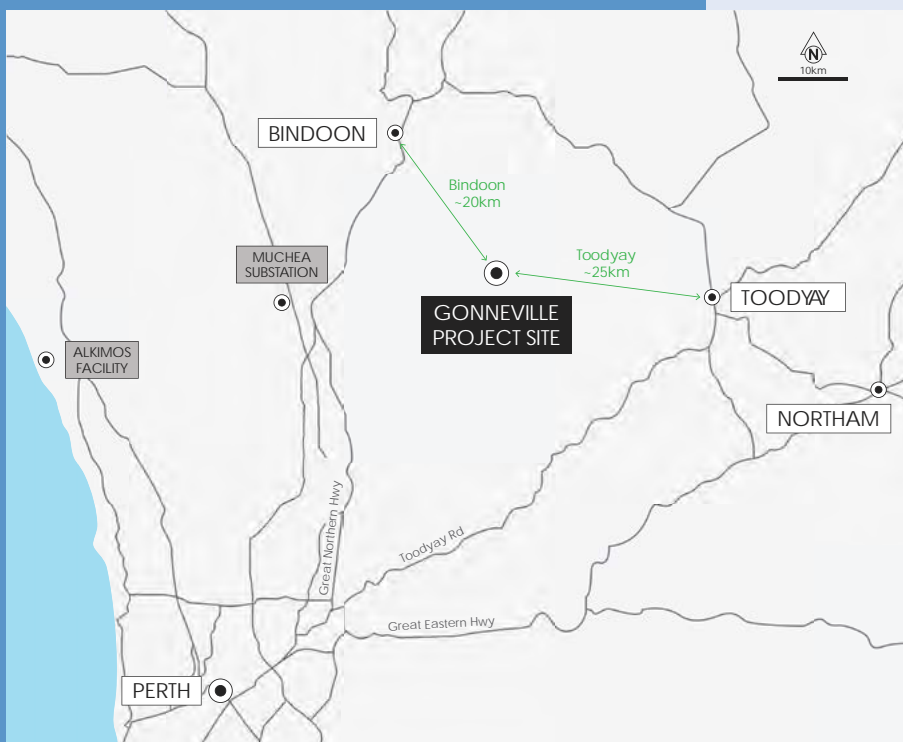
To receive Project Updates and Community Newsletters, sign up to our mailing list.



### Follow us on Facebook

Chalice Gonneville Project

# Project location



### Email:

community@chalicemining.com

### Website:

gonnevilleproject.com.au

### Phone:

0487 371 961 (9am – 4pm weekdays)

### In person:

Chalice Toodyay Office  
5 Charcoal Lane Toodyay

Thursdays 8.30 – 11.30am

