



Community Newsletter

The Gonneville Project is a significant greenfield discovery of critical minerals located on Chalice owned farmland, ~70km north-east of Perth.



Director, Sophie Curtis, introducing the inaugural members of the Toodyay String Quartet to their precious musical instruments.

These Year 4 musical stars have already been booked for their first gig!

Toodyay Strings into Action!

It was an exciting start to the 2026 school term when the inaugural Toodyay District High School String Quartet was unveiled.

Led by WA Young Artists Chamber Music Program (WAYACHAMP) Director, Sophie Curtis the students will learn violin, viola and cello together, as a quartet right from the start, with specialist tuition guided through online and in person classes.

In 2025, all Year 3 students sat a WA music exam and, from these results, the quartet was created.

Teaching is supported by local violinist Rupert Guenther as well as school teachers and musicians Shuang Ali and Belinda Allen. Toodyay District High School is a vibrant regional community where access to specialist string tuition is limited, making this opportunity especially meaningful.

Supported with funding from the 'Chalice Community Investment Program', this innovative approach introduces the benefits of ensemble playing and bringing string learning to the school for the first time.

Community Investment Program

Chalice Mining has delivered over \$420,000 to support community led initiatives and events in the areas surrounding the proposed Gonneville Project.



Check the Gonneville Project webpage for funding details.

<https://www.gonnevilleproject.com.au/community/community-investment/>

Thriving — Against The Odds

As we head into the cooler months of the year, we would like to again **thank** the enormous contribution of the volunteers and brigades who keep our homes, farms, businesses and communities safe during the summer bushfire season.

Just before Christmas, our Gonneville staff, their families, neighbours and extended Moondyne community were impacted by a sudden fire, in very challenging weather conditions.

We are extremely grateful for the outstanding efforts of DFES and our local brigades in responding to and controlling the fire at night, without loss of life or significant impact to infrastructure, farmlands or livestock.

There were obvious impacts to flora and fauna, and our permanent surveillance cameras showed just how 'close to home' the fire was. Our researchers were amazed during their post fire inspections to see our freshly hatched baby Carnaby and parents flourishing. This is the second chick successfully hatched and raised in one of our artificial hollows.

Over the last few years, we've been working with Dean Arthurell from Carnaby's Crusaders and Syrnix Environmental to test 10 artificial hollows at the Gonneville Project site. We're monitoring how well the design attracts breeding cockatoos compared with natural hollows.



Check our Facebook page for updates

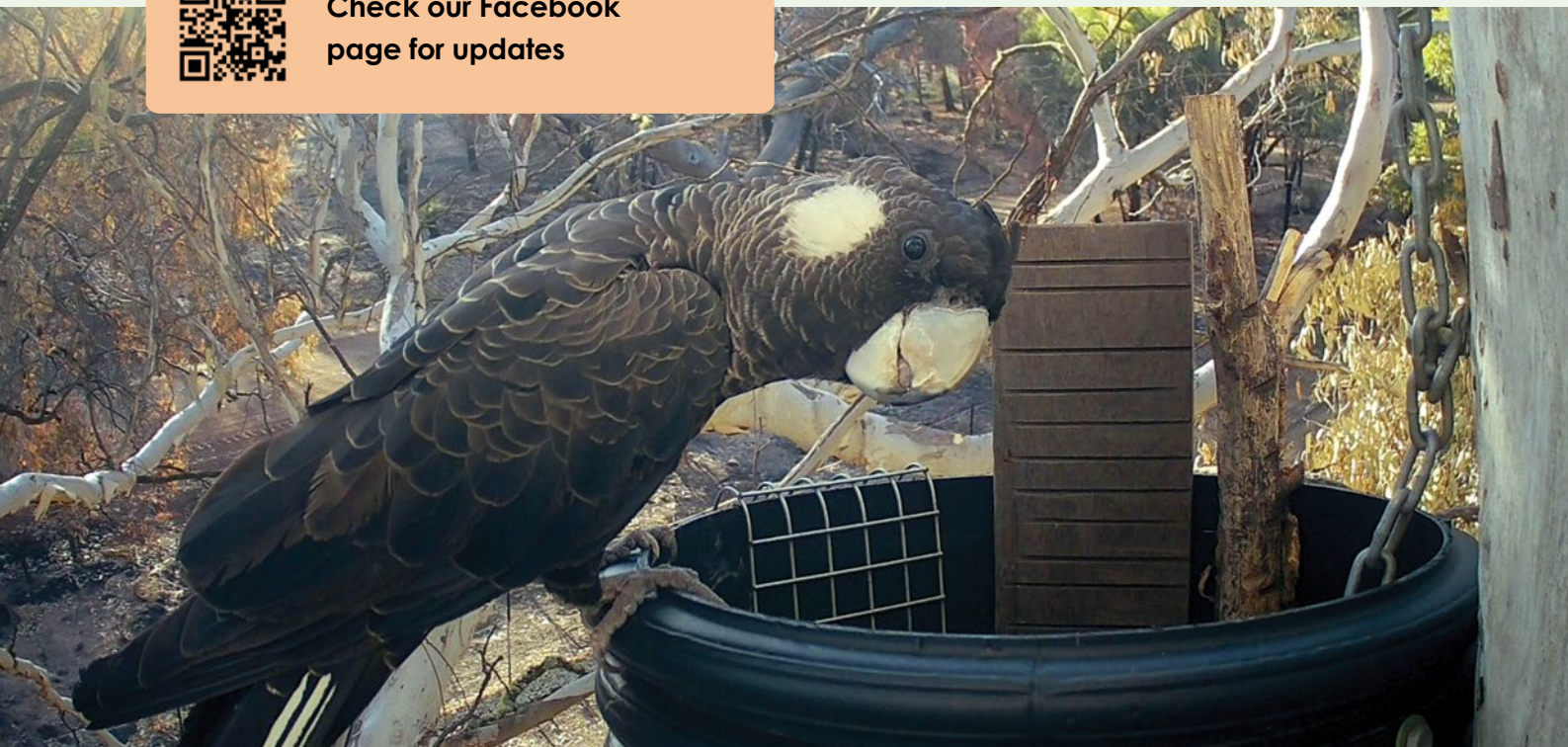


See you in Northam

Friday 1st May

Brought together by the Northam Chamber of Commerce and the Wheatbelt Business Network, the **Wheatbelt Futures Forum** brings together businesses and government organisations invested in the Wheatbelt region's economic growth and development.

Once again, Chalice is excited to support this event and hear what lies ahead for our industry colleagues and regional neighbours.



Gonneville achieves another milestone

Chalice Mining reached a major milestone in December 2025 with the completion of a positive Pre-Feasibility Study (PFS).

The release of the PFS confirmed the economic viability of the Project, paving the next steps in the rigorous State and Federal permitting process which includes more detailed studies and is expected to take at least 18 months.

Chalice is aiming to make a Final Investment Decision (FID) in 2028.

A two-year construction period will create 1200 direct jobs and the operation is scheduled to deliver 500 permanent jobs over a 20+ year mine life.

Chalice expects the Project to create regional generational wealth, not just for shareholders, but for the broader community and stakeholders.

"It is a large critical minerals Project that will be designed to minimise its impacts, so while we are confident the approvals will come; there is a high level of rigour and a lot of work and engagement required to get to that point," Chalice Managing Director, Alex Dorsch said.

"The employment opportunities are quite significant for the Project and there's the flow on impacts to the local economy through the indirect support of the operation as well as the royalties and taxation revenues," he said.

Chalice has committed to uphold the highest environmental standards as it builds and operates the mine. Alex said dust, noise and traffic impacts will all be assessed.

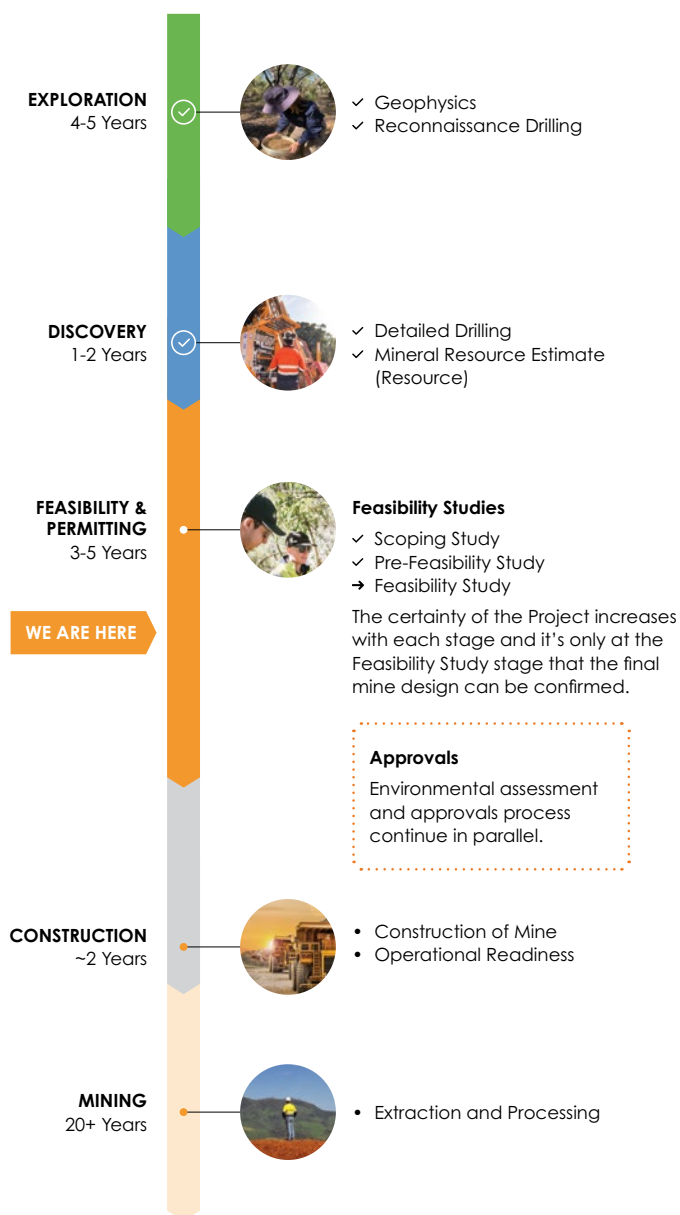
"We understand this is not a traditional mining area, we're cognisant of the sensitivities of the region and, obviously, we'll go through a rigorous approval process," Alex said.

"From the outset, we have been committed to doing things properly and community and stakeholder engagement is a fundamental part of that."

Alex added that Chalice is already demonstrating its strong commitment to environmental stewardship and has pledged that there will be no net loss of species or habitat because of the Project's development.

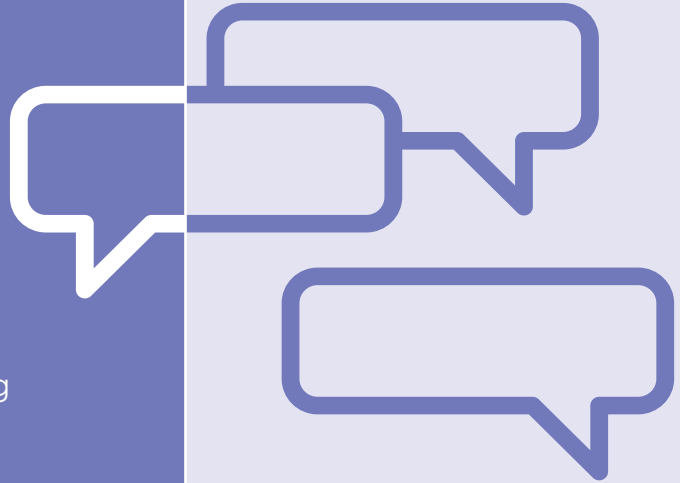
"A long-life, large-scale critical minerals mining operation is good for the state's finances and important strategically for the country, so we know the right thing to do is to demonstrate to the community that we will be a responsible citizen," Alex said.

Project Timeline



Be first in line and have your voice heard

The 3rd Local Voices 'Pulse Survey' will open in June and Voconiq is again inviting residents, businesses, community groups and visitors to the Toodyay, Northam and Chittering regions to tell us what they think.



Local
voices
matter

VOCONIQ
LOCAL VOICES

Local Voices

chalicemining.com

Independently conducted by Voconiq, the 'Pulse Survey', is an annual opportunity for direct feedback on the Gonneville Project. By scanning the QR code and registering now, 2026 Local Voices participants will receive the new questionnaire first.

Open for five weeks, survey questions will continue to cover a range of topics including environmental, infrastructure and social. Previous surveys have received 150-250 responses. The most recent survey indicated that 60-70% of the community had a positive or neutral view of the Project, with 20% opposed.

CEO Alex Dorsch says, "We definitely understand how people feel about it (Gonneville) and we're certainly working now towards mitigating those impacts as much as possible, through the design and through the approvals and consultation process".

The survey can be done online or in person. Look out for ads in local papers and on the Chalice Gonneville Project Facebook and make sure your voice is heard.

Keep in Touch

Email:

community@chalicemining.com

Website:

gonnevilleproject.com.au

Phone:

0487 371 961

(9am – 4pm weekdays)

In person:

Chalice Toodyay Office
5 Charcoal Lane Toodyay

Thursdays 8.30 – 11.30am



VOCONIQ
LOCAL VOICES


chalice