

Information Sheet

Environmental Approvals Overview

The Gonneville Project

About the Gonneville Project

- » The Gonneville Project is a critical minerals mine development, located on Chalice-owned farmland approximately 70 km north-east of Perth in the Wheatbelt region.
- » The Project hosts a deposit of palladium, platinum, nickel, copper and cobalt. These are critical minerals essential for global urbanisation and technologies that will help address climate change.
- » The supply of these minerals is predicted to fall short of future demand, making projects like Gonneville strategically important.



Nickel and Cobalt

- » Electric vehicles
- » Smart phones
- » Electronic devices
- » Batteries



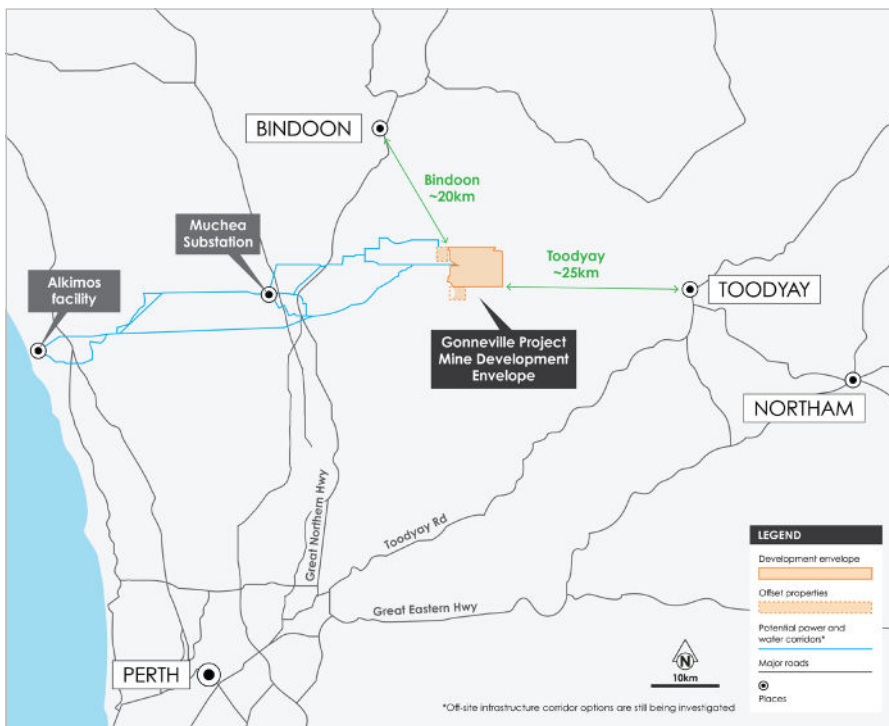
Copper

- » Solar panels
- » Wind turbines
- » Smart phones



Palladium + Platinum

- » Green Hydrogen
- » Medical devices
- » Pollution control devices in cars



- » **Before a mine, processing plant and supporting infrastructure can be developed, the Gonneville Project must receive the approval of State and Commonwealth governments.**
- » The Project is in the feasibility and permitting stage. Chalice has chosen to complete environmental approvals processes alongside ongoing engineering studies to ensure community feedback and environmental considerations can be incorporated early in the Project plans.
- » Proposed mining operations are estimated to begin in 2029, with a projected mine life of 25+ years.
- » If approved, the Gonneville Project has the potential to deliver substantial benefits to the region through local job creation, local business opportunities and contribution to the economy.

Development of the Project

- » The proposed Gonneville Project would involve construction of a mine, processing facility and supporting infrastructure, to allow the extraction and processing of critical minerals.
- » Products from the mine site would be transported to domestic or overseas customers for further refinement into end-use metals.
- » The proposed Project includes:
 - » Open pit and underground mining operations.
 - » Ore processing.
 - » Tailings storage facilities, stockpiles and waste rock landforms.
 - » Supporting infrastructure e.g. offices, workshops, water treatment plant, internal haul roads.
 - » Temporary facilities during construction e.g. accommodation and water supply.
- » This infrastructure will be contained within a 2,240ha (~22.4km²) development area on farmland owned by Chalice. This land is already approximately 56% cleared from previous agricultural use.
- » The Project also includes off-site infrastructure corridor options for water pipelines and power lines. Multiple corridor options are being considered and investigated in consultation with Water Corporation, Western Power and other stakeholders.



Water

A water pipeline will be required to supply water to the site from the Alkimos facility.



Power

A new powerline is proposed to connect the mine site to the existing South West Interconnected System (SWIS) at the Muchea substation.



Transport

Transportation corridors are still in design phase with road and/or existing rail infrastructure options being considered.



Image: Example of a 132kv single pole powerline.



Image: Example of an aboveground water supply pipeline.

- » **The Gonneville Project does not include a mine in the Julimar State Forest, which is located to the north of the Project.**
- » The Project does not restrict community access to the State Forest.
- » Existing access roads are located within or adjacent to the Julimar State Forest - Julimar, Keating and Plunkett roads. Investigations are underway to define safe access to the mine site, with upgrades to sections of these existing roads likely to be required.

About the Environmental Approvals Process

- » Before a mine can be developed, a comprehensive environmental assessment is required by the State and Commonwealth governments to evaluate details of the proposed mine and infrastructure corridors, information about potential environmental impacts, and how these impacts will be managed.
- » The Project will be assessed in accordance with the *State Environmental Protection Act 1986* and the *Commonwealth Environment Protection and Biodiversity Conservation Act 1999*.
- » In March 2024 Chalice submitted the Project for State and Commonwealth assessments and both have published a determination that the Project should be assessed.
- » WA Environmental Protection Authority will assess at the highest level - Public Environmental Review. The Commonwealth have determined the Project proposal is a Controlled Action and will be assessed through a Public Environmental Report.
- » Chalice will continue to consult widely throughout the environmental approvals processes. Community members are welcome to contribute their feedback about the Project to Chalice at any time.
- » During this process there are opportunities for public comment, both formally through the Government or informally through Chalice.

For more information about the environmental assessment and approval process or formal public comment periods, visit:

Department of Climate Change, Energy, the Environment and Water (DCCEEW):

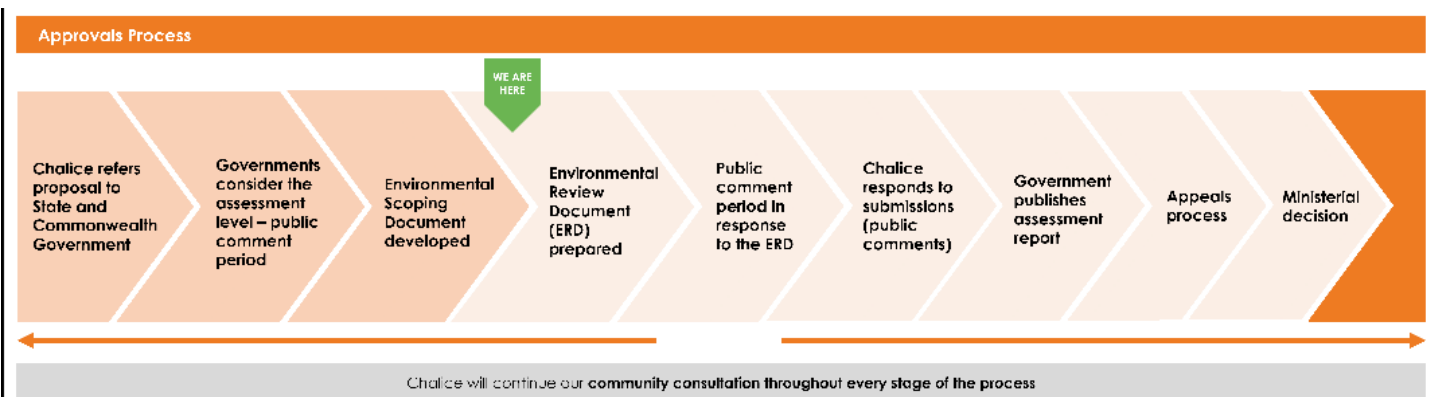
<https://www.dcceew.gov.au/about/news/welcome-to-dcceew>

WA Environmental Protection Authority (WA EPA):

<https://www.epa.wa.gov.au/public-comment-and-submissions-proposals>

What are the next steps in the environmental approvals processes?

- » Once assessment of the Project has begun, Chalice will prepare an Environmental Review Document (ERD) which will include the outcomes of further studies currently in progress. The ERD will also outline the studies Chalice has undertaken since 2020 to understand the potential environmental impacts of the Gonneville Project.
- » The ERD will be made available for the community to review and comment on as the Project develops.
- » This information will then be used by the State and Commonwealth governments to determine whether the Gonneville Project should be approved, and if so, what conditions should apply. This decision will be published by the government.
- » **The assessment and approvals processes are expected to take around 3 years to complete.**



This timeline displays the WA EPA process. The commonwealth process follows closely with similar milestones.

Understanding Environmental Impacts

Chalice recognises the need to develop the Gonneville Project sustainably and responsibly - with an industry best practice approach to environmental and cultural heritage management, and by ensuring long term positive impacts for local communities.

Chalice has undertaken extensive field studies since 2020 to understand the environmental considerations of the Project area, including:

- » Surveys of flora and fauna to gather information about the diversity, health and location of species. This has included surveys for threatened and priority species such as black cockatoo and chuditch, and native vegetation studies.
- » Studies of surface and ground water resources to understand the water quality, quantity and movements.
- » Archaeological and ethnographic cultural heritage surveys conducted by Whadjuk Traditional Owners.

Further Studies

- » Further environmental studies and community engagement will continue over the coming years.
- » Studies for noise and air quality impacts will commence soon.
- » Options for off-site infrastructure corridors for power lines and water pipelines will continue to be investigated in consultation with Water Corporation, Western Power and other stakeholders. Site investigations and community engagement throughout these corridors will be undertaken over the coming years, as engineering studies continue.

How are the impacts assessed?

The WA EPA uses 'Environmental Factors' as a system for assessing potential impacts of a project. There are 14 environmental factors, organised into five themes: **Sea, Land, Water, Air, People**. The preliminary environmental factors the Gonneville Project will be assessed against are:



LAND

Flora and Vegetation

Potential disturbance and impact on plants and vegetation types

Landforms

Potential impacts to distinctive physical landforms

Terrestrial Environmental Quality

Potential landscape and soil quality impacts

Terrestrial Fauna

Impacts on animals including habitat and biodiversity impacts



WATER

Inland Waters (surface and groundwater)

Hydrology and water quality



AIR

Air Quality

Potential emissions from the mine

Greenhouse Gas Emissions

Potential emissions and reduction opportunities



PEOPLE

Social Surroundings

Impacts including visual amenity, noise, heritage

DCCEEW considers an assessment is required if an action is likely to have an impact on Matters of National Environmental Significance (MNES).

Relevant Matters of National Environmental Significance are:

- » Threatened Species
- » Threatened Ecological Communities

Find out more about the Project

To receive Project Updates and Community Newsletters, sign up to the Chalice community mailing list at



www.gonnevilleproject.com.au/community-newsletter or scan the QR code with your phone camera

Chalice also shares information regularly via local newspaper advertisements in the Toodyay Herald, Northam Advertiser and Northern Valley News.

How to get in touch

Email: community@chalicemining.com

Phone: 0487 371 961 (9am – 4pm weekdays)

In person: Chalice Toodyay Office
Thursdays 8.30 -11.30am at 5 Charcoal Ln, Toodyay

Join us on Facebook



In response to community feedback regarding the best places to share information, Chalice recently launched the **Gonneville Project Facebook page** - a new location to find updates and ask questions about the Gonneville Project.

Scan the QR code with your phone camera to follow us on Facebook or visit www.facebook.com/ChaliceGonnevilleProject

The Gonneville Project has a new website



Visit the website now at www.gonnevilleproject.com.au or scan the QR code with your phone camera.