



Chalice Community

Newsletter



Issue 10 | September 2023

Welcome to our latest community newsletter. Chalice Mining discovered a significant mineral deposit in early 2020, containing nickel, copper, cobalt, palladium, platinum and gold - the Gonneville Project. The Project is located ~70km NE of Perth and ~25km west of Toodyay, on Chalice-owned farmland. The Project is currently in the studies stage and is not yet a mine.

Gonneville Project Scoping Study

Chalice recently released our Scoping Study for the Gonneville Project. The Study outlined that Gonneville has the potential to become a low-carbon, long-life, green metals mine that could deliver substantial economic and regional benefits.

What is a Scoping Study?

- « A Scoping Study is an initial high-level evaluation of potential mine development options.
- « The Gonneville Project Scoping Study outlines a development plan which includes an indicative open pit and processing concepts. Underground mining options will continue to be investigated.
- « While the Scoping Study is the first step to consider the mine scope, costs, and timeline, it is not intended to provide a final mine plan or definitive plans for logistics and infrastructure.

Where is the potential Gonneville Mine located?

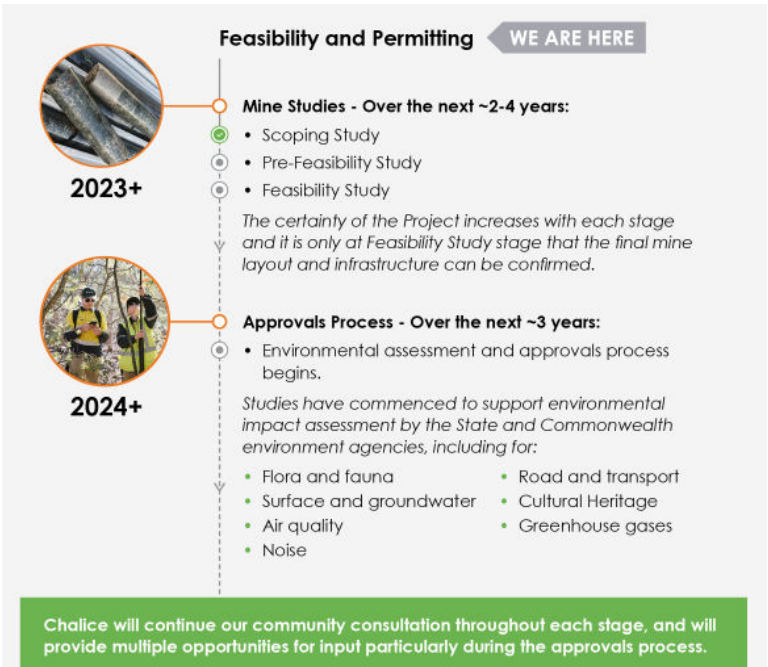
- « The Project area is on 100% Chalice-owned farmland, located ~25km west of Toodyay.
- « The proposed mine does not extend into the Julimar State Forest, which is located to the north of Gonneville.
- « Access to the Julimar State Forest remains open to the community.

Next steps for the Gonneville Mining Project

Chalice has commenced a Pre-Feasibility Study, and plans to commence WA and Commonwealth Government environmental approvals processes in the first half of 2024.

Economic studies have forecast that the Gonneville Project has the potential to deliver substantial benefits to the region:

- « Contribute up to **~\$18 billion to the WA economy** over 18+ years of operations.
- « **~1,200** peak jobs during construction and **~500** jobs during operations, with mining targeted for the end of the decade.
- « Chalice will **prioritise local jobs** for both construction and operations phases.



Local Voices survey results

Chalice understands that consultation with the community will play a key role in all our planning and considerations for a potential mine at the Gonnevillie Project. To help us better understand the needs, concerns and priorities of the local community, Chalice recently launched Local Voices to seek feedback through an independent and confidential survey program. Results for the first survey have now been received. Thank you to everyone who participated. Here's a summary of the topics you told us are important:

View the survey results at www.voconiqlocalvoices.com/chalice

Have your say: A series of surveys will be conducted over the next few years. Register for future surveys at the link above.

Local water resources

- « Any potential future mine will source water that does not impact local groundwater supply.
- « Detailed ground and surface water studies are underway to understand and manage any impacts of a potential mine to local water sources.
- « Chalice has commenced discussions with the Water Corporation to investigate water supply options.
- « Chalice recognises that water is a critical shared resource that must be managed efficiently and responsibly.

Roads

- « Chalice is currently investigating both road and rail transport options.
- « Studies will continue over the next 2-4 years to confirm logistics options. The community will be consulted on these options.
- « We recognise that roads are an important issue for the community, however it is only once a Feasibility Study is completed that Chalice will fully understand the transport requirements for a potential mine.

Biodiversity

- « Chalice is taking a responsible and balanced development approach that maximises production of critical green metals but also recognises the potential impacts to the local environment and communities.
- « Chalice has made a biodiversity commitment of no net-loss of species or habitat diversity.
- « On-the-ground restoration work has begun to support fauna habitats and connect remnant areas of vegetation.

Access to the Julimar State Forest

- « The Gonnevillie Project is located on Chalice-owned farmland to the south of the Julimar State Forest.
- « There is no mine in the Julimar State Forest.
- « Our exploration in the Julimar State Forest forms part of our regional exploration activities, which are being progressed separately to the Gonnevillie Project.
- « There are initial indications of minerals at depth, however no economic deposit has been identified within the Julimar State Forest.
- « Access to the State Forest remains open to the community.

What we're doing with your feedback

Your feedback provides valuable insights into what is important to your community. Chalice is sharing these survey results across our business to ensure we understand and use this community feedback in our planning and decision making.

We will continue to roll out a number of actions in response to your feedback from our first Local Voices survey, with results already informing our stakeholder engagement approach. We will continue to communicate these across our regular project updates, community newsletters and our company website.

How your community benefits

As a thank you for completing the first survey, participants were able to nominate a community group of their choice to receive a \$10 donation through the Local Voices Rewards program.

***\$2,476 worth of donations were unlocked for local community groups for this first survey.**

*Some people decided to opt out of the rewards and not allocate funds.

Learn more about Chalice's community contributions at www.chalicemining.com/community

Chalice in the community

Chalice has had a busy few months in the local community, attending and supporting a range of events.

Chalice was proud to sponsor the Toodyay International Food Festival in early August, which was a well-attended event for the region, running alongside the already successful Avon Descent activities. The Chalice team were proud to sponsor and attend the Taste of Chittering festival in Bindoon later that month, where we spoke to community members about our Gonneville Project, exploration activities and answered any questions they had.

Coming up, Chalice will be sponsoring the Toodyay Agricultural Show on 7th October 2023, and the Bindoon Agricultural Show on 14th October 2023. We welcome you to come and visit our stand at these events and chat to our team for more information on the Gonneville Project.

Chalice Community Investment Program

Funds provided through the Chalice Community Investment Program have assisted the hard work of a number of local community groups to implement a range of initiatives. The Community Investment Program aims to support local community groups and projects in the region, including the likes of the Toodyay Volunteer Fire and Rescue Service appreciation dinner, the Bindoon Bowling Club social bowls and the Northam Federals Football Club. Read more about projects supported by the Chalice Community Investment Program below.

Northam Primary School

Chalice supported the Northam Primary School to assist them in purchasing water tanks for their student gardening program.

The school has been running a gardening program, helping students learn about science, biology, composting and foods sources. The program has taught students the importance of water conservation and with their new water tanks, they are further exploring the interactions between water and our environment. We visited the school during science week to see their work.



Toodyay Miniature Railway

Chalice recently supported the Toodyay Miniature Railway to install much needed protective roofing over their historical rail carriages. The Toodyay Miniature Railway is an important tourist attraction within the region, attracting visitors from throughout WA.

The Railway also serves as a wonderful hobby group for the committee who work tirelessly to maintain, repair and operate the railway for the community, held on the first and third Sunday of each month at Duidgee Park, Toodyay.



Community Investment applications now open

For funding up to \$10,000.

Chalice is committed to positively contributing to the local communities that surround the Gonneville Project, to achieve meaningful social and economic benefits. One way Chalice can contribute is through our **Community Investment Program**. The program supports local community groups and non-profits in the Shires of Toodyay, Northam, Chittering and Goomalling.

To apply for funding and read more, visit www.chalicemining.com/community-investment

Applications close Saturday, September 30.

Environmental work at Gonneville

The Chalice environmental team have been busy with a program of baseline fauna surveys commencing this month. The surveys are conducted by teams of specialist zoologists and are designed to gather information on wildlife in the region.

This work includes targeted Black Cockatoo surveys and habitat assessments, along with monitoring of Chuditch. This work will be used in our Gonneville Project studies to minimise and avoid impact to wildlife and the environment.

Traditional Owners participate in environmental surveys together with botanists and zoologists. This round of surveys will complement and expand on the extensive surveys Chalice has already conducted, covering a ~6,000 ha area. Future work includes insect and aquatic fauna surveys.

Work also continues on our ongoing water monitoring program, which includes regularly testing groundwater and surface water samples. Chalice recognises that water is a critical, shared resource and these baseline surveys will help us deliver on our goal to ensure our future activities do not impact water usage for others. We look forward to keeping you updated as this environmental work progresses.

The Gonneville Biodiversity Strategy

Our Biodiversity Strategy outlines Chalice's commitment to ensure a 'science-based no net loss of species or habitat diversity as a result of our operations'. In an exciting first step, Chalice recently partnered with leading environmental experts at the Western Australian Biodiversity Science Institute and Syrinx Environmental to commence work on the Gonneville Restoration Project. This work is focussed on the restoration of biodiversity on Chalice-owned farmland and provides a unique opportunity to enhance the diversity of habitats and species and strengthen ecological corridors between areas of remnant vegetation. We look forward to sharing more updates as on-the-ground work progresses.



Current employment

Job opportunities are expected to grow as the project advances and recruiting locally will continue to be a key focus for Chalice.

As job opportunities become available, Chalice will continue to advertise locally as well as on the Employment page of our website.

www.chalicemining.com/employment

Current positions available are also posted in the window of our Toodyay Pop Up Office, located at 5 Charcoal Lane, Toodyay.

Get in touch

For Information Sheets and key details, visit our Community webpage:

www.chalicemining.com/community

Subscribe to our regular Community Newsletter at:

www.chalicemining.com/community-newsletter

[Ask us a question?](#)

Send an email to: community@chalicemining.com

Call us on: 0487 371 961 (Mon - Fri from 9am - 4pm)

Visit us at the Toodyay Pop Up Office: Shop 5, Charcoal Lane everyday Thursday, 8.30am – 11.30am